

## LEVEL SWITCH STANDARD UNIT



### GSS-F25

Product-ID: 603245

Level Switch Standard Unit

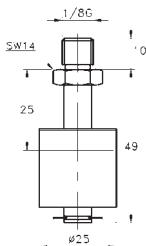
#### General:

The level switches offer to the user a simple and reliable solution in the liquid level control application. These standard units are available with cable length of 3.0 m. The working principle is based on the movement of the magnetic float which drives the reed switch inside the level-stem. The cable and switch are epoxy sealed inside the stem and the sealing process is produced by a temperature controlled heating system. A rugged and free of maintenance product.

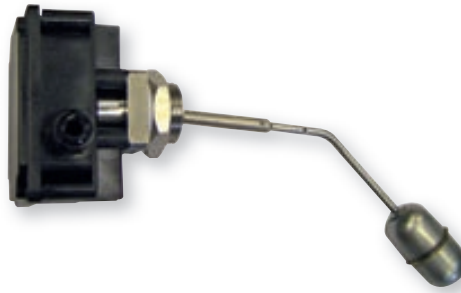
- Constructions up to 180 °C working temperature on request
- Protection class IP65
- Constructions ATEX on request

#### Specifications:

<b>Float:</b>	PVDF
<b>Density:</b>	≥ 0.65 g/cm <sup>3</sup>
<b>Stem:</b>	PVDF
<b>Pressure max.:</b>	6 bar
<b>Temperature max.:</b>	130 °C
<b>Contact:</b>	SPST (NO)
<b>Power:</b>	70 VA / 50 W
<b>Voltage:</b>	300 V AC / 300 V DC
<b>Current:</b>	0.5 A AC / 0.7 A DC
<b>Connection:</b>	1/8"
<b>Switching difference:</b>	25 mm
<b>Accuracy switching point:</b>	±3 mm
<b>Cable:</b>	3.0 m
<b>Electric connection:</b>	
<b>Working temperature:</b>	-30 ... +55 °C
<b>Relative humidity:</b>	0 ... 90 % RH
<b>Scope of supply:</b>	Device, manual



## LEVEL SWITCH



### GNS-C1

Product-ID: 606051

Level Switch (with 1 microswitch)

### GNS-C2

Product-ID: 606210

Level Switch (with 2 microswitches)

#### General:

These level switches offer the most reliable solution for liquid level control where side mounting system is required.

- Switch head magnetically actuated
- 1 or 2 microswitches
- Adjustable stem length
- Brass or AISI-316 construction
- good repeatability
- very reliable

#### Specifications:

<b>Processconnection:</b>	G1"
<b>Density medium:</b>	> 0.7 g/cm <sup>3</sup>
<b>Pressure max.:</b>	25 bar
<b>Temperature max.:</b>	180 °C
<b>Working temperature:</b>	-30 ... +55 °C
<b>Relative Humidity:</b>	0 ... 90 % RH
<b>Hysteresis max.:</b>	20 mm
<b>Weight:</b>	440 g
<b>Body materials:</b>	Natural Brass or Stainless steel (AISI-316)
<b>Float material:</b>	Stainless steel (AISI-316)
<b>Microswitch:</b>	1x or 2x SPDT
<b>Voltage:</b>	250 V AC / 48 V DC
<b>Current:</b>	3AAC / 3A DC
<b>Electr. Connection:</b>	via screw terminals
<b>Wiring:</b>	Independent micro switches separately wired SPDT
<b>Protection Class:</b>	IP65 (Housing)

#### Optionen:

##### GNS-C1-S

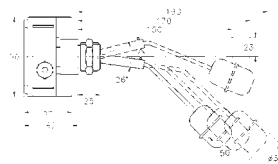
Product-ID: 607988

Level switch with 1 microswitch, body material stainless steel AISI - 316

##### GNS-C2-S

Product-ID: 605151

Level switch with 2 microswitches, body material stainless steel AISI - 316



#### Stem position:

	1 Microswitch		2 Microswitch	
	ON	OFF	ON	OFF
• Long	-46 mm	-63 mm	-32 mm	-49 mm
• Medium	-48 mm	-61 mm	-34 mm	-47 mm
• Short	-50 mm	-60 mm	-36 mm	-46 mm

• Switch point tolerance: ±5 mm

## FLOAT SWITCH



### RWI-016PPK

Product-ID: 602912

Float switch (polypropylene)

### RWI-016PVK

Product-ID: 602913

Float switch (PVDF)

### RW-015HKL

Product-ID: 606211

Float switch (stainless steel)

#### General:

Mechanical level controller for liquids. A magnet-equipped float triggers a pre-fixed reed switch.

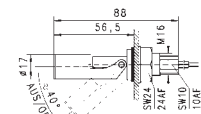
- wall mounting
- reliable and with good repeatability
- stainless steel design for high temperatures

#### Application:

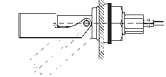
Sensor suitable for: water, oil

#### Specifications:

	RWI-016PPK	RWI-016PVK	RW-015HKL
<b>Measuring principle:</b>	reed switch	reed switch	reed switch
<b>Switch type:</b>	n.c. or n.o depending on installation position		
<b>Switching power:</b>	250 V AC, 0.5 A, 50 VA	250 V AC, 0.5 A, 50 VA	220 V AC, 0.28 A, 30 VA
<b>Density medium:</b>	>0.6 g/cm <sup>3</sup>	>0.75 g/cm <sup>3</sup>	>0.70 g/cm <sup>3</sup>
<b>Working temperature:</b>	max. 90 °C	max. 130 °C	max. 200 °C
<b>Working pressure:</b>	PN = 3 bar	PN = 6 bar	PN = 5 bar
<b>Mounting position:</b>	horizontal	horizontal	horizontal
<b>Protection class:</b>	IP 65	IP 65	IP 65
<b>Electrical connection:</b>	~ 50 cm cable	~ 50 cm cable	~ 60 cm cable
<b>Materials:</b>			
<b>Body:</b>	PP	PVDF	stainl. steel 1.4571
<b>Float:</b>	PP	PVDF	stainl. steel 1.4571
<b>Seal:</b>	viton	viton	
<b>Weight:</b>	approx. 75 g	approx. 75 g	approx. 120 g



RWI/016...  
Assembly internally:  
Hole diameter Ø 16,5 mm



Assembly externally:  
Hole diameter Ø 23 mm