

Product Information

LC-...HM / HK

**Level transmitter
 LC-...HM / HK**



- Mounted in the cover
- Materials combination may be selected

Characteristics

A float fitted with a magnet affects a chain of reed contacts within the guide tube. The reed contacts are fitted with resistances in such a way that in the very simplest model, behaviour is similar to a potentiometer. The measured value can therefore be evaluated as a resistance value or as a radiometric signal (depending on the supply voltage). Alternatively, a sensor model with 4..20 mA analog output (2 wire or 3 wire) or 0..10 V may be selected. The arrangement of the reed contacts ensures the clarity of the switching state, and therefore a clean detection of the level. Resolution is 10 or 20 mm. The device has high reproducibility.

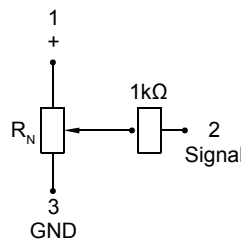
Technical data

Switch	reed switch chain with float fitted with magnet	
Mechanical Connection	LC-S45	G 1 A
	LC-S44	G 1 1/2 A
	LC-K52	G2A
For metering ranges, lengths and divisions	see "Ranges, dimensions and weights"	
Length tolerance	±5 mm	
Pressure resistance	LC-S45	PN 20 bar
	LC-S44	PN 20 bar
	LC-K52	PN 40 bar
Medium temperature	-20..+105 °C	
Ambient temperature	-20..+70 °C	
Storage temperature	-20..+80 °C	
Density of medium	LC-S45	³ 0.34 g/cm ³
	LC-S44	³ 0.44 g/cm ³
	LC-K52	³ 0.66 g/cm ³

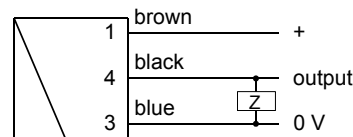
Output	resistor chain (radiometric), 4..20 mA or 0..10 V DC
Electrical connection	plug DIN 43650-A / ISO 4400 or for round plug connector M12x1, 4-pole (only for electronic output)
Ingress protection	IP 65 IP 67 for round plug connector
Materials medium-contact	LC-S45 CW614N and Spansil LC-S44 CW614N and Spansil LC-K52 Stainless steel 1.4404
Materials Electronics housing	stainless steel 1.4305
Weights	see table "Ranges, dimensions and weights"
Conformity	CE

Wiring

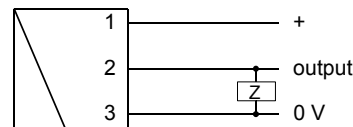
Reed switch chain Typ WB
 with plug DIN 43650-A / ISO 4400



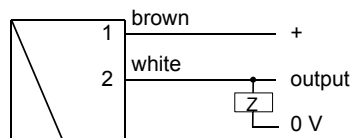
3 wire electronics Typ TS / VS
 for round plug connector M12x1, 4-pole



3 wire electronics Typ TB / VB
 with plug DIN 43650-A / ISO 4400



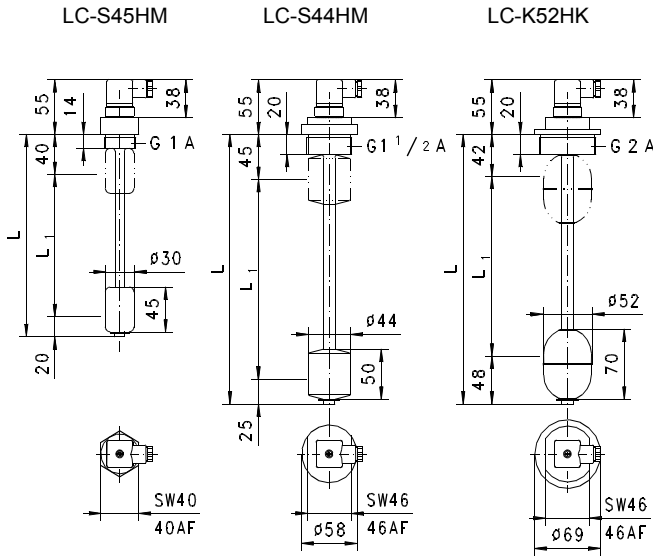
2 wire electronics Typ ZB / ZS



Product Information

LC-...HM / HK

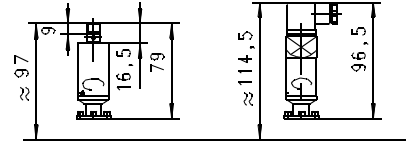
Ranges, dimensions and weights



Electronic attachments

Round plug connector

Plug
 DIN 43650-A / ISO 4400



Handling and operation

Note:

Not suitable for use in media with ferritic particles.

Installation

Installation is carried out by screwing the sensor into a suitable threaded drilling on the upper side of the container. A flat seal is included in the scope of the delivery.

Ordering code

1. 2. 3. 4.
 LC -

○=Option

Types LC-	L	L1	Division mm	Resistance * R _N / Ohm	Tolerance Ohm	Weight kg
S45HM0250	250	190	10	1800	±136	0.5
S45HM0500	500	440		4300	±186	0.6
S45HM0750	750	690		1503	± 52	0.6
S45HM1000	1000	940		2055	± 64	0.7
S44HM1000	1000	930		2295	± 95	0.7
S44HM1500	1500	1430	20	3543	±121	0.8
S44HM2000	2000	1930		4790	±146	0.8
K52HK0250	250	160		1500	±130	1.0
K52HK0500	500	410		4000	±280	1.0
K52HK0750	750	660		1647	± 83	1.0
K52HK1000	1000	910	20	2246	± 94	1.1
K52HK1500	1500	1410		3493	±120	1.1
K52HK2000	2000	1910		4741	±144	1.1

* + 1000 Ohm
 Pre-resistance

1. Version				
S45HM	screw-in fitting G 1 A brass - float Spansil			
S44HM	screw-in fitting G 1 1/2 A brass - float Spansil			
K52HK	screw-in fitting G 2 A stainless steel			
2. Tube length L				
0250	250 mm		●	●
0500	500 mm		●	●
0750	750 mm		●	●
1000	1000 mm		●	●
1500	1500 mm		●	●
2000	2000 mm		●	●
3. Output				
W	resistive sensors			
Z	○ 4..20 mA (2 wire)			
T	○ 4..20 mA (3 wire)			
V	○ 0..10 V			
4. Electrical connection				
B	plug DIN 43650-A / ISO 4400	●	●	●
S	○ round plug connector M12x1, 4-pole	●	●	●

Options

- Special lengths
- Special divisions
- Temperature 120 °C

Accessories

- Round plug connector/cable