

Product information

Pressure Switch PAK



- Repeability
- Adjustable switch point
- Change over contact
- Plug DIN 43650-A / ISO 4400

Characteristics

Mechanical pressure switch in which a membrane is pre-tensioned by a spring. An adjustment knob permits the setting of the switch point. The setting can be fixed with hexagon socket screw.

Technical Data

| | | |
|----------------------------|---|---|
| Switch | Mechanical switch | |
| Connecting thread | For vacuum switch pressure range -0,85..-0,15 bar gauge | Female thread G ¹ / ₄ ; horizontal flange (incl. M5x40, O-ring 5x1,5) |
| | For diaphragm press switch switching range 0,2..+16 bar gauge | Female thread G ¹ / ₄ ; horizontal flange (incl. M5x40, O-ring 5x1,5) Optional: Female thread Rc ¹ / ₄ |
| Tolerance | Switching range -0,85..-0,15 bar gauge | Reference range value ± 0,05 bar at +20°C |
| | Switching range 0,2..+16 bar gauge | Max. ± 2 % relative to range at +20°C |
| Hysteresis | Switching range -0,85..-0,15 bar gauge (vacuum switch) | Reference value 100..250 mbar (not adjustable) |
| | Switching range 0,2..+16 bar gauge (membrane pressure switch) | Reference value 0,1 bar +5..10 % from Switching point (not adjustable) |
| Pressure resistance | PS 20 bar / PS 60 bar | |
| Media temperature | Seal: | |
| Ambient temperature | NBR | -10..+80 °C |
| | Low temperature NBR | -40..+80 °C |
| | Viton | 0..+100 °C |
| | EPDM | -40..+100 °C |
| | FVMQ | -40..+100 °C |
| Media | Water, oil, gases | |
| Switching frequency | max. 100 cycles/min. | |
| Wiring | Plug DIN 43650-A / ISO 4400 Change over Nr. 0.342 | |

| | |
|--|--|
| Switching voltage switching current (maximum values) | Plug DIN 43650-A / ISO 4400 Resistive load (maximal range) 3 A at 24 V DC, 6 A at 250V AC Inductive load (maximal range) 1 A at 24 V DC, 1 A at 250 V AC |
| | Optional: Plug M12x1 Resistive load (maximal range) 4 A at 48 V AC, 3 A at 24 V DC Inductive load (maximal range) 1 A at 48 V AC, 1 A at 24 V DC |
| Protection class | Plug DIN 43650-A / ISO 4400: 1 – PE connection |
| Ingress protection | IP 65 (IP67 at Plug M12x1) |
| Electrical connection | Plug DIN 43650-A / ISO 4400 Optional: Plug M12x1 |
| Materials | Housing: Zinc die casting, Adjustment knob: aluminium (powder coated) |
| Material Sealing / membrane | Optionally NBR, EPDM, FKM, PVMQ |
| Weight | 0,29 kg |

Ranges

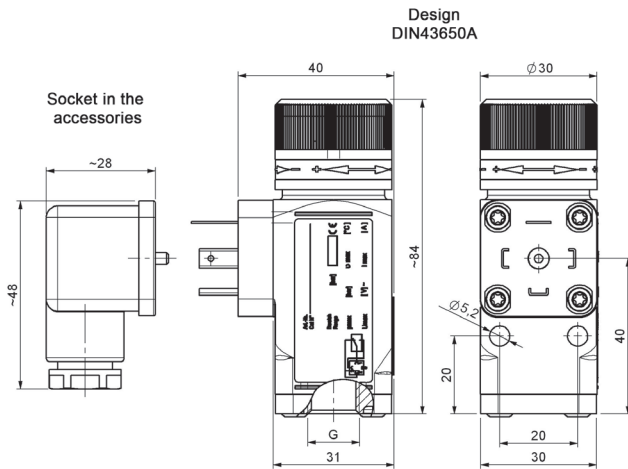
| Switching range bar (gauge) | Pressure resistance PS bar | Type |
|-----------------------------|----------------------------|------------|
| -0,85..-0,15 | 20 | PAK-001Z.. |
| +0,20..+ 2,00 | 60 | PAK-002Z.. |
| +0,50..+ 8,00 | 60 | PAK-008Z.. |
| +1,00..+16,00 | 60 | PAK-016Z.. |

Process connection

| | Useful installation depth | Standard |
|--|---------------------------|------------------|
| Female thread G ¹ / ₄ | 8 mm | ISO228-1 |
| Female thread Rc ¹ / ₄ | | ISO 7/1, BS 21 |
| Horizontale flange | | Factory standard |

Product information

Dimensions



Ordering code

PAK - 1. 2. 3. 4. 5. 6.

| | | | | | |
|---------------------------------|--|---|---|---|---|
| 1. Switching range | | | | | |
| 001 | -0,85..- 0,15 bar | | | | |
| 002 | +0,20..+ 2,00 bar | | | | |
| 008 | +0,50..+8,00 bar | | | | |
| 016 | +1,00..+16,00 bar | | | | |
| 2. Connection material | | | | | |
| Z | Zinc die casting | | | | |
| 3. Connection size | | | | | |
| 008G | Female thread G ¹ / ₄ | ● | ● | ● | ● |
| 008R | Female thread Rc ¹ / ₄ | ● | ● | ● | ● |
| 031F | Horizontale flange | ● | ● | ● | ● |
| 4. Rotatable | | | | | |
| 0 | Fixed | | | | |
| 5. Electrical connection | | | | | |
| B | Plug DIN 43650-A / ISO 4400 | | | | |
| 6. Sealing / membrane | | | | | |
| N | NBR | | | | |
| E | EPDM | | | | |
| V | Viton | | | | |

Handling and operation

Notes

- If the medium is dirty, install a filter.
- It must be ensured that the values given for voltage, current, and power are not exceeded.
- Check resistance to aggressive media, no DI water.

Torques and thread lengths of the fluid connection:
Thread length 8 mm, tightening torque 20 Nm -25

Adjustment

- Turning the adjusting knob to the left for a larger value, turning to the right for a smaller value. After setting the knob can be fixed with a hexagon socket screw by using the supplied key.

Options

- Factory setting of the switch point on falling or rising pressure.