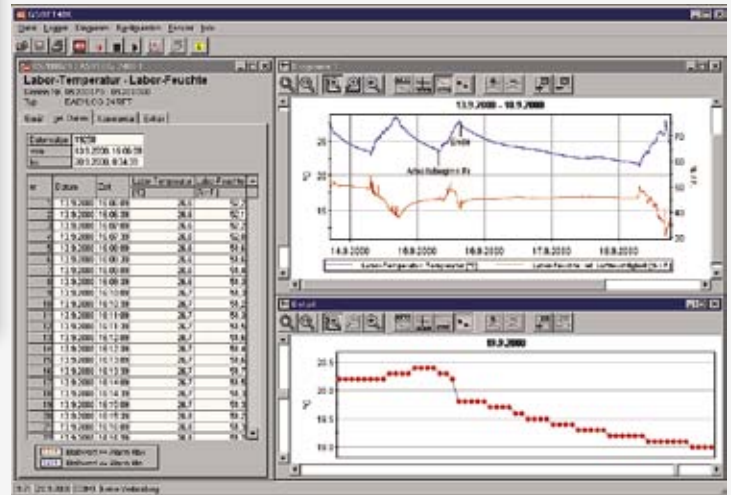
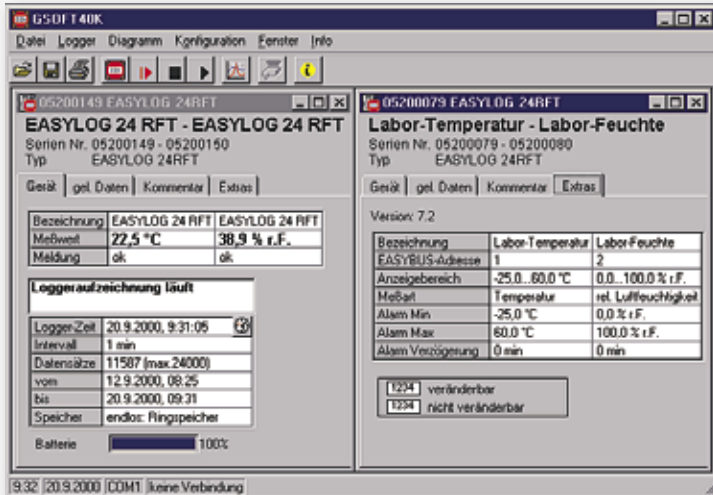


(INCL. CONNECTION CABLE EBSK01)



GSOFT 40K

General:

Comfortable multilingual (English, German, Czech and French language) operation software for the very easy operation of the EB-Logg's and T-Logg's.

Comfortable user interface - the essentials on a glance:

The programme is menu driven, the most important commands are additionally available in a toolbar. Whenever necessary the software gives hints and messages. Therefore any user with a few basics about how to operate standard Windows software will be able to operate it. Loggers can be connected, started and read out by single mouseclicks.

Display of logger state informations

All necessary informations are compressed to a single clearly arranged window for each connected logger.

Setting of special functions

The loggers are supporting alarm functionality - easily configurable by the GSOFT 40K Software. All other important logger settings are displayed, too. E.g. a label up to 16 characters long can be assigned to each logger channel, which is stored in the logger. You may for example label the location or other useful details by using this function.

Additional entering of remarks

If You have read out a logger and want to store the data on disk or harddisk there is the possibility to additionally enter remarks of any length for each recording, for example to describe and comment unusual occurrences during the recording.

The data: Tables and diagrams

After reading out the recordings the data will be displayed in form of a table. With the diagram the data of several loggers can be displayed simultaneously.

Additional diagram functions:

- labelling of measuring values
- real time axis
- zooming of any section within the diagram
- legend (inactivate able)
- measurement cursor (inactivate able)
- marking of measurings with symbols (inactivate able)

The main target of the design of GSOFT40K was most easiest operationability, therefore just a few easy mouseclicks are necessary to display data fast and clear. Both diagrams and tables are displaying the data in realtime, even daylight savings time settings are taken into account automatically. And of course tables and diagrams can be printed out.

E.A.S.Y.Bus & simultaneous operation and display of several loggers

Because of the EASYBus more than one logger can be connected at the same time at a single serial PC interface. Distances of up to 1000 m can be covered. To simplify operation all connected loggers can be operated at the same time. This reduces the expense of operation time and even largest EASYBus-systems can be controlled easily.

Remote operation via conventional and mobile telephone nets

With GSOFT 40K loggers can be operated and read out via any distance by the means of the conventional or the mobile telephone nets. Because of this feature measuring values and recordings can be collected centrally covering distances of hundreds of kilometers. (p.r.t. page 100)

Automated Read Out

All loggers connected directly or via conventional an mobile telephone nets can be read out automatically. The points of time can be entered separately (e.g. each day lor each week ... at X.XX o'clock), the read out data will be archived on hard disk. The system gets even more reliable and the handling of multiple loggers gets much easier.

Export function

To be able to use the logger data with other software applications (EXCEL, WORD,...), a flexible export function is integrated. The data can be converted to textfiles which can be processed by all popular programmes.

System requirements:

One of the following 32- or 64-bit Microsoft Windows operating system is required: Windows XP, Windows Vista, Windows 7, Windows 8 (not working under Windows RT and at ARM or Intel Itanium based Windows systems)

Update GSOFT 40K

(for registered users with declaration of serial number of original version)

Update can downloaded freely from our homepage
(prerequisite: existence version > 7.0)