

**Product Information**

# Central Unit

## Characteristics

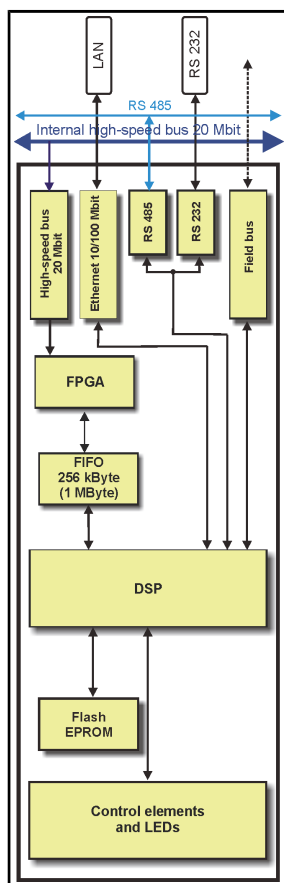
The **Central Unit** is the interface between the internal high-speed bus, the Ethernet connection, an RS 232 interface, and the internal RS 485 bus. It is a plug-in unit for the housing and provides the clock for the amplifiers as well as external clocking and synchronization for additional housings resp. chassis. External trigger signals are also administered by the central unit. A remote control can be connected via the remote interface. Parameter setting of the amplifiers is done with the software DaSoft via the Ethernet or RS 232 interface of the central unit.



## Technical Data

Sample rate	40 kHz
Digital output	RS 232, Ethernet
Supply voltage.	+5 V / 270 mA
Environmental temperature	0..+50 °C

## Block Diagram



## Dimensions

19" plug-in unit, 3 U height, 5 U width, depth 160 mm

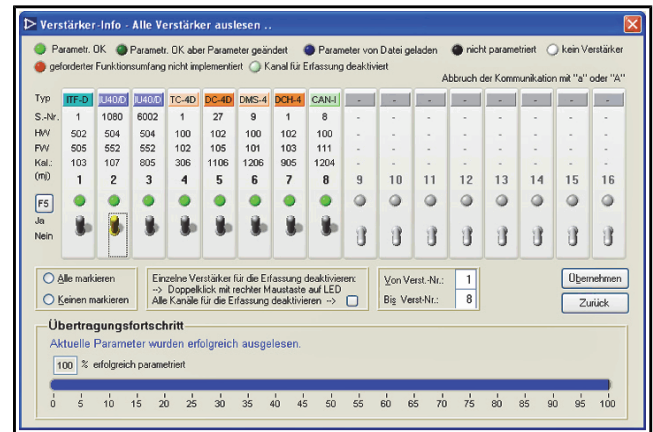
## Ordering Code

DASIM-G-ZE-DE (to be ordered separately for DASIM, included in chassis for SIQUAD)

# Parameter Setting Software

## Characteristics

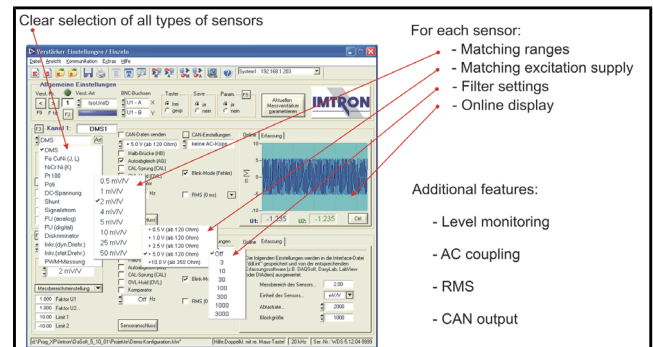
The Parameter **Setting Software DaSoft** allows configuration of a system and its communication interfaces for individual setting up of the amplifiers and add-on units.



Sensor data can be stored in a sensor database for automatic system configuration. Integration into a customer-specific parameter setting software is possible via a communication DLL.

The following settings are done with DaSoft:

- Type of sensor, measurement ranges, sensor excitation and further options for the functionality of the amplifiers.
- Sample rate 1 Hz to 40 kHz (depending on amplifier type), sensor range (nominal value), and physical unit.



DaSoft provides the system settings and generates an interface file "DDL.int" with the necessary specifications for data acquisition. The data acquisition software (DAQSoft or others with corresponding drivers) takes this information of the "DDL.int". The file is always updated with actual data after each communication of DaSoft with the measurement system. If changes were done in the system with DaSoft, it will be automatically recognized by the acquisition software. Therefore it is not possible to measure with wrong parameters.

## Ordering Code

No separate ordering code, as included in price of central unit and price of USB-to-CAN configuration package.